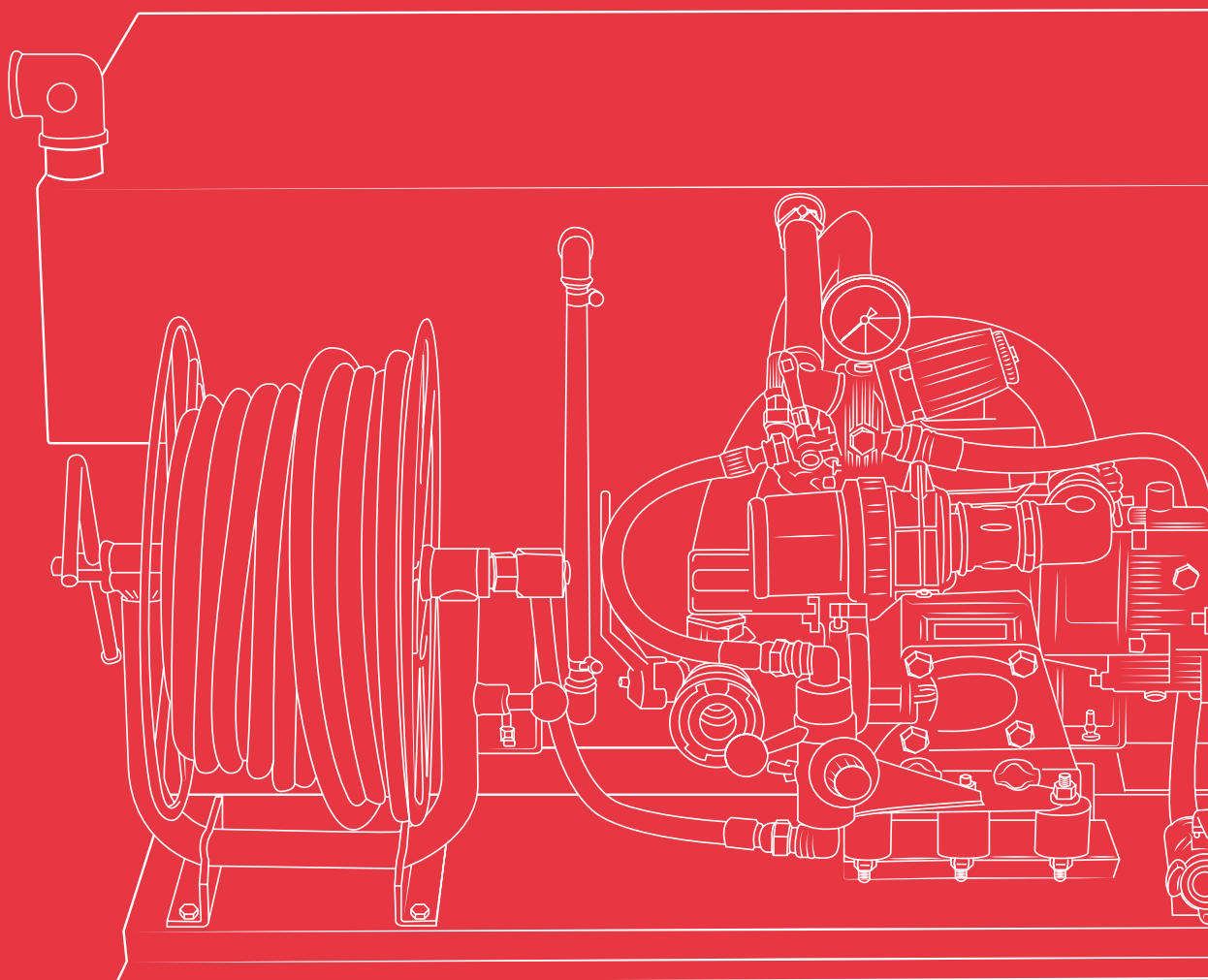


# Skid unit with a piston pump

Vertical stainless steel tank  
High pressure



# Vertical skid unit with a piston pump

High pressure | Up to 200 bar

Rapid intervention skid units designed for pickup vehicles and trailers, equipped with piston pumps up to 200 bar with a maximum flow of up to 42 L/min.

- High-quality components and great replacement part availability
- Resistant tanks made of 2 mm AISI-304 stainless steel
- The best quality/price ratio
- 2 year warranty



## What is included?

Motor	<b>Gasoline</b> (13.5 HP)
Piston pump	From 21 l/min   200 bar to 42 l/min   100 bar
Quick attack winder	Equipped with a high-pressure hose
Water tank	450 L or 600 L
Attack nozzle	Multi-purpose water and foam
Suction oversleeve	5 m long
Foam-forming agent proportioner system	2.5mm injector

## Uses

Wildland fires	Less recommended
Container and vehicle fires	Recommended use
Cleaning and unclogging	Recommended use

# 1 Motor pump unit

Available options. 4-stroke gasoline combustion motors and 3-piston high-pressure volumetric pumps.



Motors	Power *	Pump	Max. pressure **	Max. flow **
B&S XR2100	13.5 HP	XWL 42.10 N	100 bar	42 L/min.
B&S XR2100	13.5 HP	XW 21.20 N	200 bar	21 L/min.

☐ Gasoline motor.

\* The nominal engine power indicated in this document is the net power tested on a production engine for the engine model pursuant to SAE J1940 (Briggs& Stratton) at a specific speed. This value may vary in mass produced motors. The actual output power of the engine installed on the end machine will vary depending on a number of factors such as the applicable engine operating speed, the environmental conditions, maintenance and other variables.

\*\* These values are at direct pump outlet.

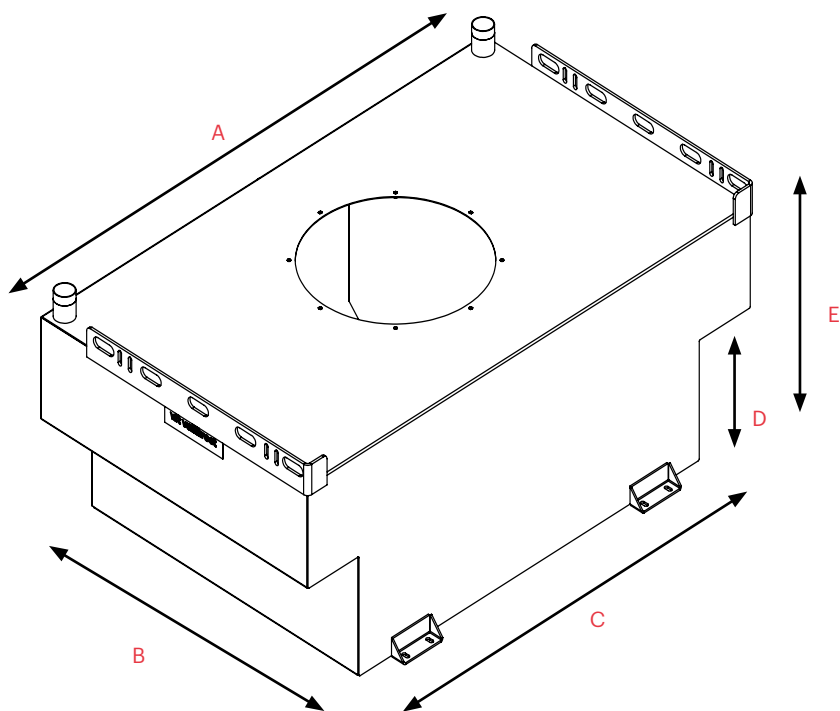
\*\*\* The power, pressure and flow values are valid in working conditions: temperature 25°C at sea level. **IMPORTANT:** Engine power will decrease 3.5% for every 300 meters above sea level and 1% for each 5.6°C above 25°C.



## 2 Water tank

Vallfirest Vertical Stainless Steel tanks are designed to concentrate the skid unit load in the area closest to the vehicle cabin. The T-shape design avoids wheel arches on pickup vehicles to optimize the available space.

- Made of 2 mm AISI-304 stainless steel.
- 2 longitudinal breakwaters to prevent water from moving to the side to ensure vehicle stability
- 1 1-1/2" filling spout on the top with couplings (Barcelona, Storz, Guillemin or others) to fill the tank from a hydrant or pressurized external water source.
- 1 configurable 1-1/2" high vent on the top.
- 1 hinged inspection cover with a useful diameter of 320 mm, depending on the model, to inspect the tank.
- A water level indicator over connecting ducts.
- A 3/4" drain to empty the tank.
- Pump return connection to fill the tank by suctioning water from a non-pressurized external water source.
- The tank connects to the vehicle bed with 4 fixing points on a silent block system that absorbs load stress and movement.
- Enameled.



- A: upper width.
- B: front length.
- C: bottom width.
- D: bottom height.
- E: tank height.

Standard colors		Tank dimensions				
Yellow   White   Red   Stainless Steel Customizable color upon customer request.		Depósito	A [mm]	B [mm]	C [mm]	D [mm]
		450 VD	1310	865	1000	277
		600 VD	1310	865	1000	730

## 3 Components included

### 3.1 Control panel

Control panel with LED light switch, pressure gauge, time counter, pressure regulator, filter, valves for suction and water drive, and foam percentage regulation knob.

#### TECHNICAL DATA

- Baked paint coating



### 3.2 Winder

Made of anti-corrosive material with a manual starting crank and lock system.

#### TECHNICAL DATA

- Capacity for 50 m long DN12 hose\*



### 3.3 Foam-forming agent proportioner system

Compact and easy-to-use, foam mixing with a proportional manual selector valve. Creates a stable mix of foam-forming agent in the water. Venturi effect "in line eductor" system which mixes water and foam-forming agent in the drive circuit.



### 3.4 Suction oversleeve

Clear flexible PVC spiral absorption oversleeve with rigid PVC spiral and smooth inner surface. Includes non-return foot valve and filter. Includes a Storz connector for connection to the Vallfirest skid unit.

#### TECHNICAL DATA

- Length: 5 m
- Oversleeve diameter: DN25 (1")
- Weight: 2.2 kg (DN25)



### 3.5 Hose

DN12 (1/2") or DN10 (3/8") rigid hose as per the pump model. Comprised of an inner layer of synthetic rubber reinforced with 1 metal mesh (R1AT) or 2 meshes (R2AT). Features a quick connection system for a multi-purpose water and foam nozzle.

#### TECHNICAL DATA

Hose type as per the operating pressure:




- SAE 100 R1AT DN12 (1/2"): 160 bar operating pressure, 0.45 kg/m weight
- SAE 100 R2AT DN12 (1/2"): 275 bar operating pressure, 0.65 kg/m weight
- Ask for other hose lengths



### 3.6 Multi-purpose nozzle

High-pressure and high-range nozzle for water and foam. With quick connection system.\*

#### TECHNICAL DATA

- Maximum pressure: 250 bar
- Maximum flow: 45 L/min.
- Concentrated stream > 
- Hollow cone/fog stream > 
- Foam stream > 

\* Ask about options for 280 bar skid units

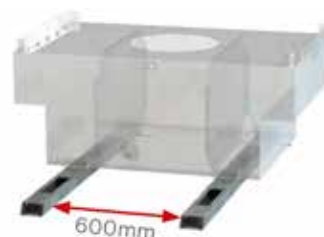


### 3.7 Tank lifting structure

Tank frame enabling the tank to be lifted and transported by means of a pallet jack or forklift.

#### DATOS TÉCNICOS

- 100\*50\*2 mm steel tube, 1400 mm long section.
- Durable powdercoated finish.



## 4 Optional accessories

### 4.1 Nozzles

#### Water

High-pressure and high-range nozzle. Adjustable angle. Interchangeable ceramic nozzle tip and quick connection system.

##### TECHNICAL DATA

- Maximum pressure: 220 bar
- Maximum flow: 45 L/min.
- Concentrated stream > —
- Hollow cone/fog stream > ◀



#### Foam

High-pressure and high-range nozzle. Adjustable angle. With quick connection system.\*

##### TECHNICAL DATA

- Maximum pressure: 280 bar
- Maximum flow: 45 L/min.
- Concentrated stream > —
- Hollow cone/fog stream > ◀

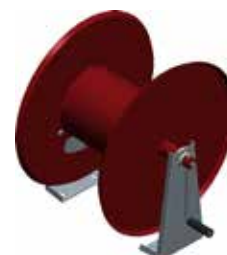


### 4.2 100 m Manual winder

Made of anti-corrosive material with a manual starting crank and lock system.

##### TECHNICAL DATA

- Capacity for 100 m flat 25 hose



### 4.3 Electric winder

Made of anti-corrosive material. With an electric rewinder with a 12V motor.

##### TECHNICAL DATA

- Capacity for 50 DN12 (1/2") hose
- Ask for longer hose lengths..



### 4.4 Tool carrier structure

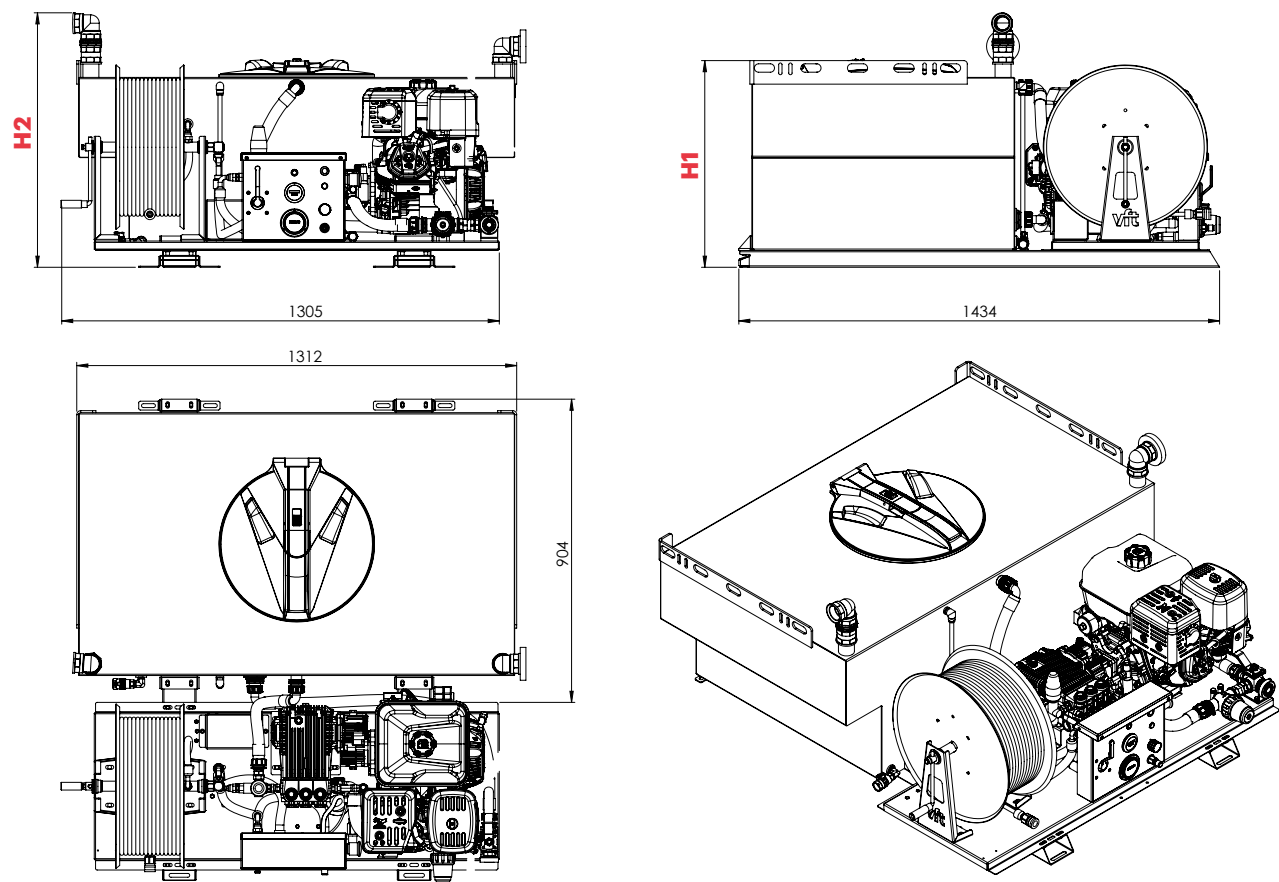
Different possibilities; fully customizable. The operability of pickup vehicles is increased with tool carrier structures accompanying the units: manual tools, drip torches, chainsaws, water packs, combat packs.

##### TECHNICAL DATA

- Features a tool carrier cabinet
- Features an equipment carrier tray with a railing
- Custom made for each vehicle
- Approximate total weight: 80 kg



## 5 General Dimensions



## 6 Configurations available

Ref. VFT	Tank	Motor	Battery and electric start	Power *	Pump	Max. Pressure **	Max. flow **	Approx dry weight	H1	H2
DVD1045-G63AO	450 VD	B&S XR2100	YES	13.5 HP	XWL 42.10 N	100 bar	42 l/min		615 mm	760 mm
DVD1045-G67AO	450 VD	B&S XR2100	YES	13.5 HP	XW 21.20 N	200 bar	21 l/min		615 mm	760 mm
DVD1060-G63AO	600 VD	B&S XR2100	YES	13.5 HP	XWL 42.10 N	100 bar	42 l/min		780 mm	925 mm
DVD1060-G67AO	600 VD	B&S XR2100	YES	13.5 HP	XW 21.20 N	200 bar	21 l/min		780 mm	925 mm

VD: vertical tank, double cabin.

☐ Gasoline motor.

\* The nominal engine power indicated in this document is the net power tested on a production engine for the engine model pursuant to SAE J1940 (Briggs& Stratton) at a specific speed. This value may vary in mass produced motors. The actual output power of the engine installed on the end machine will vary depending on a number of factors such as the applicable engine operating speed, the environmental conditions, maintenance and other variables.

\*\* These values are at direct pump outlet.

\*\*\* The power, pressure and flow values are valid in working conditions: temperature 25°C at sea level. **IMPORTANT:** Engine power will decrease 3.5% for every 300 meters above sea level and 1% for each 5.6°C above 25°C.

Any questions? Contact us: [clientes@vallfirest.com](mailto:clientes@vallfirest.com) | T. +34 938 678 779